

## Dial Indicator 401 Series

### Features

Standard: ANSI B89.1.10

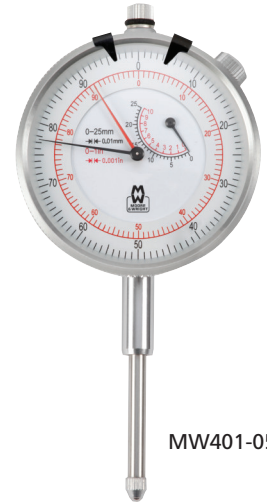
- Aluminium body
- With Tungsten carbide measuring tip
- Adjustable bezel with stop screw
- Tolerance indicators
- Lug back (flat back is optional)



MW401-01



MW401-02



MW401-05

### DIAL INDICATOR

Code No	Range (mm)	Range (inch)	Resolution (mm)	Resolution (inch)	Bezel Diameter	Stem Diameter	Description
MW401-01	-	0-0.5	-	0.001	58mm	3/8" spindle dia.	Lug back
MW401-02	-	0-1.0	-	0.001	58mm	3/8" spindle dia.	Lug back
MW401-05	0-25.0	0-1.0	0.01	0.001	60mm	8mm spindle dia.	Lug back